

Human PGF Protein

Cat. No. PGF-HM201

Description

Source	Recombinant Human PGF Protein is expressed from HEK293 with hFc tag at the C-Terminus. It contains Leu19-Arg221.
Accession	P49763-1
Molecular Weight	The protein has a predicted MW of 48.6 kDa. Due to glycosylation, the protein migrates to 60-70 kDa based on Bis-Tris PAGE result.
Endotoxin	Less than 1EU per μg by the LAL method.
Purity	> 95% as determined by Bis-Tris PAGE > 95% as determined by HPLC

Formulation and Storage

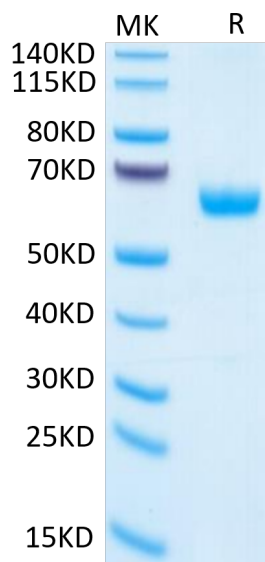
Formulation	Lyophilized from 0.22 μm filtered solution in PBS (pH 7.4). Normally 8% trehalose is added as protectant before lyophilization.
Reconstitution	Centrifuge the tube before opening. Reconstituting to a concentration more than 100 $\mu\text{g}/\text{ml}$ is recommended. Dissolve the lyophilized protein in distilled water.
Storage	-20 to -80°C for 12 months as supplied from date of receipt. -80°C for 3 months after reconstitution. Recommend to aliquot the protein into smaller quantities for optimal storage. Please minimize freeze-thaw cycles.

Background

Placental growth factor (PGF) is another member of the VEGF family of cytokines with pro-angiogenic and pro-inflammatory effects. Retinal inhibition of PGF in combination with VEGF-A prevents vascular leakage and CNV possibly via modulating their own expression in mononuclear phagocytes. PGF-related, optimized strategies to target inflammation-mediated angiogenesis may help to increase efficacy and reduce non-responders in the treatment of wet AMD patients.

Assay Data

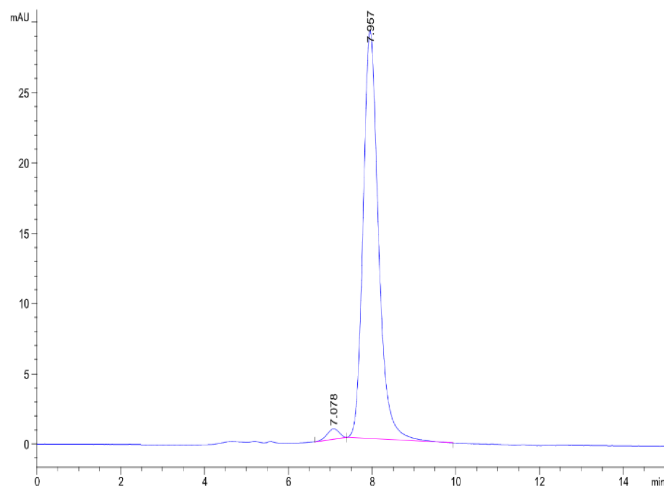
Bis-Tris PAGE



Human PGF on Bis-Tris PAGE under reduced condition. The purity is greater than 95%.

SEC-HPLC

Assay Data

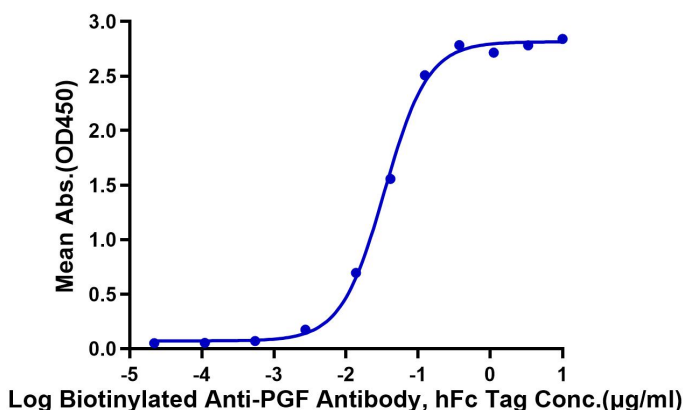


The purity of Human PGF is greater than 95% as determined by SEC-HPLC.

ELISA Data

Human PGF, hFc Tag ELISA

0.1µg Human PGF, hFc Tag Per Well

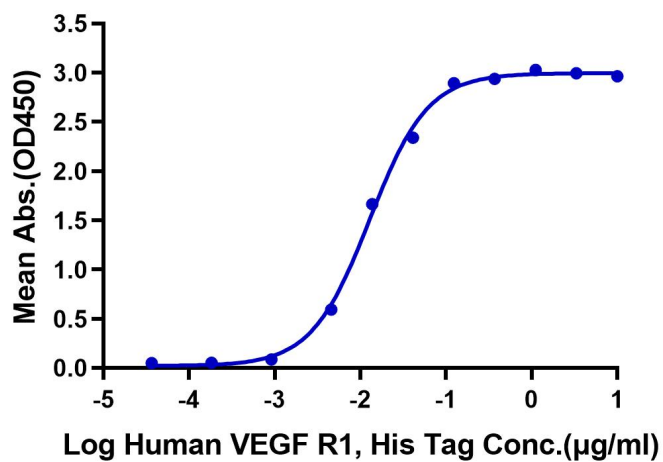


Immobilized Human PGF, hFc Tag at 1µg/ml (100µl/Well) on the plate. Dose response curve for Biotinylated Anti-PGF Antibody, hFc Tag with the EC50 of 34.1ng/ml determined by ELISA (QC Test).

ELISA Data

Human PGF, hFc Tag ELISA

0.05µg Human PGF, hFc Tag Per Well



Immobilized Human PGF, hFc Tag at 0.5µg/ml (100µl/Well) on the plate. Dose response curve for Human VEGF R1, His Tag with the EC50 of 12.8ng/ml determined by ELISA.